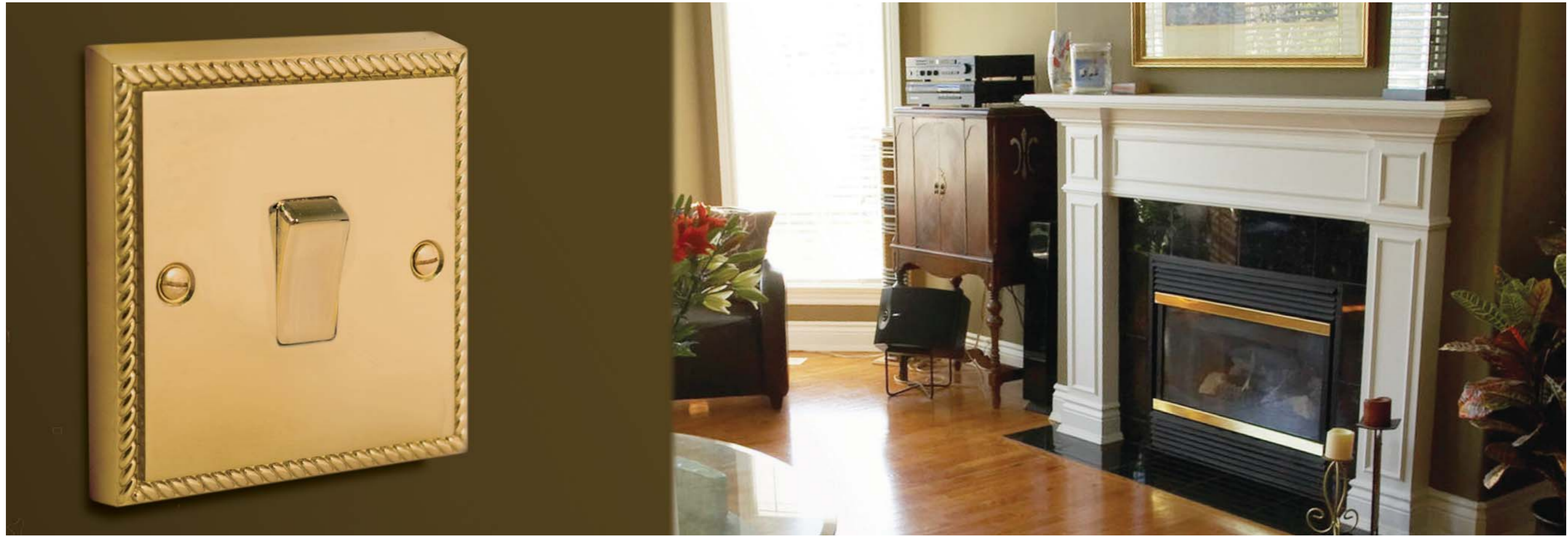


Brass Georgian

An extensive range of the highest quality accessories with a cast brass plate and an attractive roped edge design



Features



No visible plastic around switches



Flush neon lens



Cast brass plate with classic Georgian rope edge



Integral gasket for moisture protection



Angled in-line colour coded captive terminals

Range Content



10AX Switches



13 Amp Sockets



45 Amp Switches



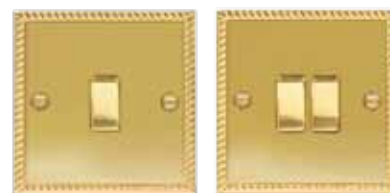
Fused Connection Units

Brass Georgian

10 AMP 10AX PLATE SWITCHES

Catalogue Number	Description	Carton Qty
NBG12	10AX plate switch 1 gang, 2 way	5
NBG13	10AX plate switch intermediate	5
NBG14	Bell push	5
NBG15	10AX plate switch 3 pole fan isolator	5
NBG42	10AX plate switch 2 gang, 2 way	5
NBG43	10AX plate switch 3 gang, 2 way	5
NBG44	10AX plate switch 4 gang, 2 way	5

• Manufactured to BS EN 60669-1



NBG12

NBG42

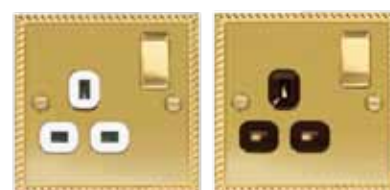


NBG44

13 AMP DOUBLE POLE SOCKET OUTLETS

Catalogue Number		Description	Carton Qty
Black	White		
NBG21B	NBG21W	1 gang 13A switched socket	5
NBG22B	NBG22W	2 gang 13A switched socket	5

• Manufactured to BS 1363 part 2



NBG21W

NBG21B

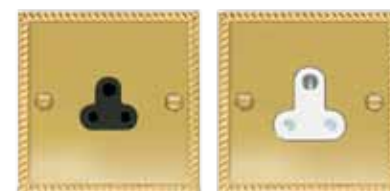


NBG22W

ROUND PIN AND EXPORT SOCKET OUTLETS

Catalogue Number		Description	Carton Qty
Black	White		
NBG28B	NBG28W	2A unswitched socket round pin	5
NBG29B	NBG29W	5A unswitched socket round pin	5
NBG99B	NBG99W	15A 1 gang switched socket	5
NBG98B	NBG98W	16A 2g unswitched Euro socket	5

• Manufactured to BS 1363 part 2



NBG28B

NBG29W

20 AMP DOUBLE POLE SWITCHES

Catalogue Number	Description	Carton Qty
NBG31	20A DP switch with neon	5

• Manufactured to BS EN 60669-1



NBG31

INSERT COLOURS:
W = White, B = Black.



13 AMP FUSED CONNECTION UNITS

Catalogue Number	Description	Carton Qty
NBG50	13A switched FCU	5
NBG52	13A switched FCU with neon	5
NBG53	13A switched FCU with neon and cable outlet	5
NBG54	13A unswitched FCU	5
NBG55	13A unswitched FCU with cable outlet	5

- Manufactured to BS 1363 part 4



45 AMP DOUBLE POLE SWITCHES

Catalogue Number	Description	Carton Qty	
Black	White		
NBG70B	NBG70W	45A DP switch with 13A socket & neons	5
NBG72		45A DP switch with neon, double plate	5
NBG74		45A DP switch with neon, single plate	5

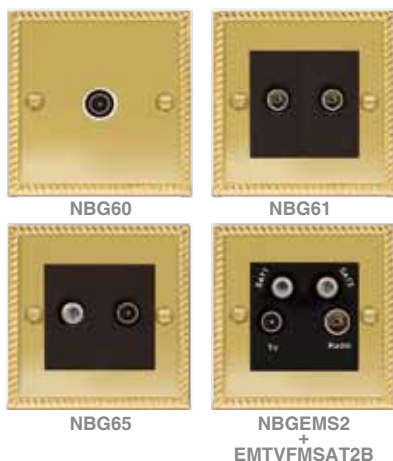
- Manufactured to BS 4177
- Manufactured to BS EN 60669-1



45 AMP FLEX OUTLET

Catalogue Number	Description	Carton Qty
NBG79	45A amp flex outlet (export only)	5

- Supplied with 3 way terminal block



CO-AXIAL AND SATELLITE SOCKETS

Catalogue Number	Description	Carton Qty
NBG60	Co-axial socket, 1 gang	5
NBG61 ⁺	Co-axial socket, 2 gang	EM
NBG62 ⁺	Isolated co-axial socket, 1 gang	EM
NBG63 ⁺	Isolated co-axial socket, 2 gang	EM
NBG64 ⁺	Satellite socket, 1 gang	EM
NBG65 ⁺	Satellite and co-axial socket, 2 gang	EM
NBG66 ⁺	Diplex TV/FM socket, 2 gang	EM
NBG67 ⁺	Triplex TV/FM/Sat - Screened	EM
NBG68 ⁺	Triplex TV/FM/Sat + Return & 1 gang Tel - Screened	EM
NBG69 ⁺	Quadplex TV/FM/Sat (x2) + Return & 1 gang Tel - Screened	EM

- EM = Euro-module configuration
- + Supplied as kit of Euro-module components
- For white modules – please see our euro-module range

* See our Euro-module range, for further Telecom, Data and Co-axial Options

INSERT COLOURS:

W = White, B = Black.

Brass Georgian

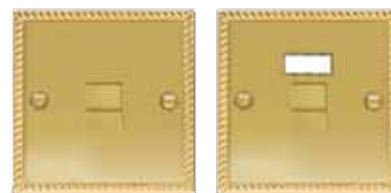
TELEPHONE AND DATA OUTLETS

Catalogue Number	Description	Carton Qty
NBGBTM1	Telephone master, 1 gang	5
NBGBTM2 ⁺	Telephone master, 2 gang	EM
NBGBTS1	Telephone slave, 1 gang	5
NBGBTS2 ⁺	Telephone slave, 2 gang	EM
NBGRJ111	RJ11 socket, 1 gang	5
NBGRJ112 ⁺	RJ11 socket, 2 gang	EM
NBGRJ451	RJ45 data outlet socket, 1 gang	5
NBGRJ452 ⁺	RJ45 data outlet socket, 2 gang	EM

+ Supplied as kit of Euro-module components

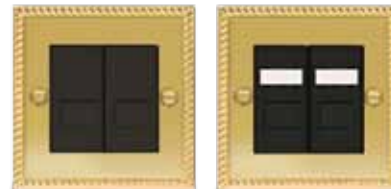
• For white modules – please see our euro-module range

* See our Euro-module range, for further Telecom, Data and Co-axial Options



NBGBTM1

NBGRJ451



NBGRJ112

NBGRJ452

DIMMER SWITCHES - PUSH ON/OFF

Catalogue Number	Description	Carton Qty
NBG81P	1 gang, 2-way push 400W	5
NBG82P	2 gang, 2-way push 400W	5
NBG83P	3 gang, 2-way push 400W	5
NBG84P	4 gang, 2-way push 400W	5
NBG85P	1 gang 1000W - square plate (export)	5
NBG86P	1 gang, 2-way push 2000W - square plate (export)	5

• Suitable for tungsten lamps, low voltage transformers & mains GU10 halogen *

* De-rating required

• Manufactured to BS EN 60669-2-1



NBG81P

NBG82P



NBG83P

FAN CONTROLLER

Catalogue Number	Description	Carton Qty
NBG87	1 gang, 1 way rotary, 400W	5

• Under development, please contact customer services for availability



NBG87

SHAVER SOCKET

Catalogue Number	Description	Carton Qty	
Black	White		
NBG20B	NBG20W	Shaver socket 115/230V dual voltage	5

• Manufactured to BS EN 615588-2-5



NBG20W

NBG20B



NBG94



NBG95

BLANK PLATE

Catalogue Number	Description	Carton Qty
NBG94	1 gang blank-plate	5
NBG95	2 gang blank-plate	5

NFS28/10BR



NFS19/10BR

NFS38/10BR

SPARE ACCESSORIES

Catalogue Number	Description	Carton Qty
NFS19/10BR	M3.5 x 19mm screws, pack of 10	100pks
NFS28/10BR	M3.5 x 28mm screws, pack of 10	100pks
NFS38/10BR	M3.5 x 38mm screws, pack of 10	100pks

COMPLEMENTARY RANGES



GRID RANGE

A comprehensive range of Switches, Indicators, Secret Keys and Dimmer modules that provide a seamless blend to the Brass products.



EURO-MODULE RANGE

A flexible solution of Co-ax, Screened Co-ax/Satellite, Telephone, and Data "Euro-Modules".